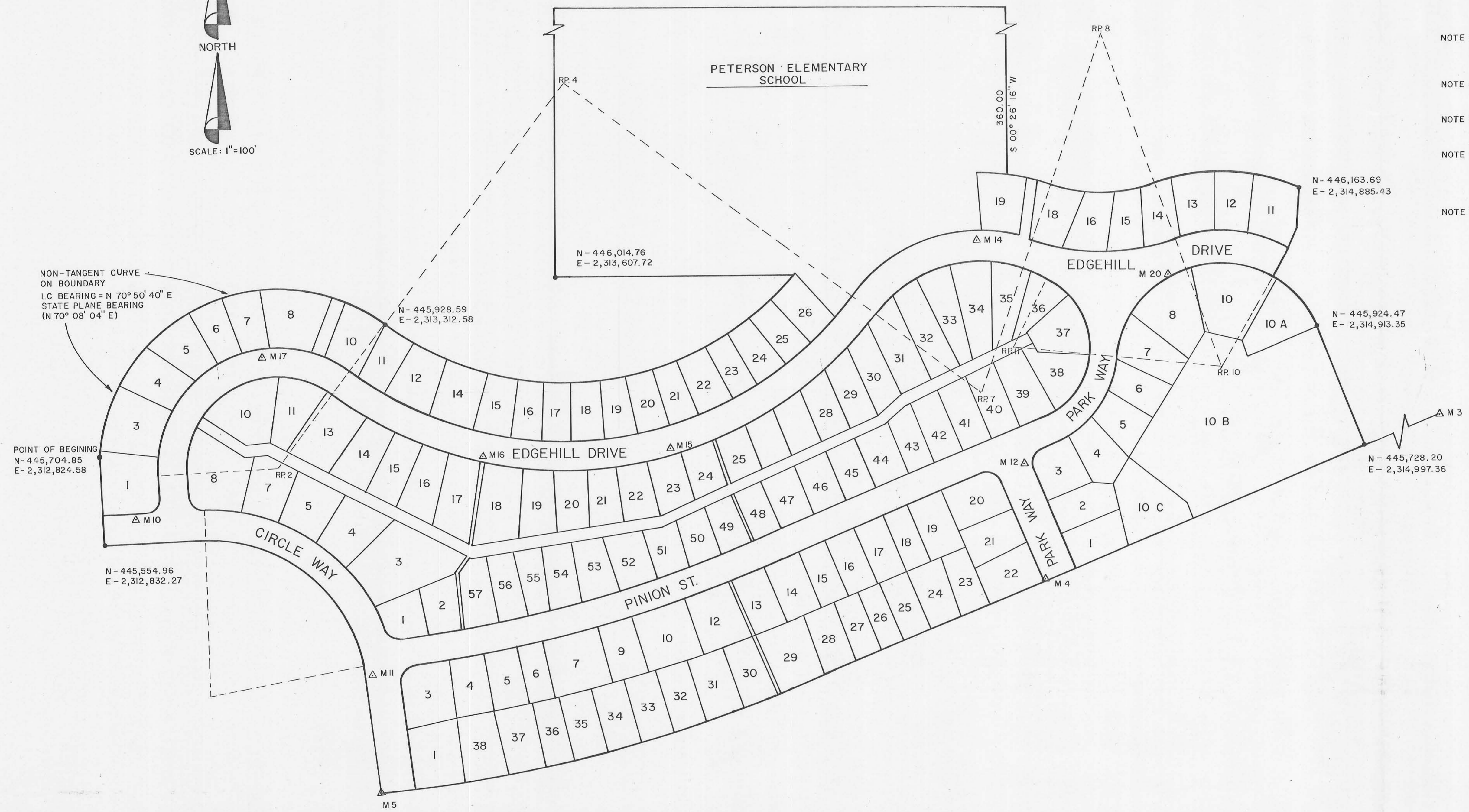
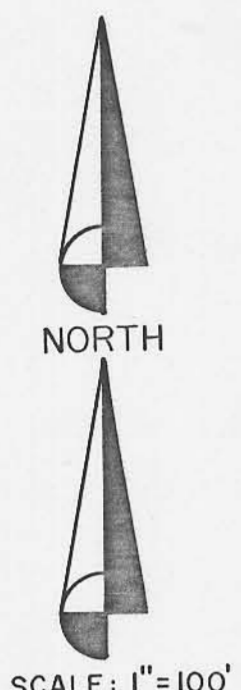


072

- NOTE 1 - THIS DRAWING IS TO BE WORKED WITH THE SUNNYSIDE SUBDIVISION - PLAT "B" RECORDED AT THE CARBON COUNTY COURTHOUSE RECORDED ON APRIL 19, 1977 - BOOK 3 OF PLATS, PAGE 164.
- NOTE 2 - BASIS OF BEARING IS THE UTAH STATE PLANE COORDINATE SYSTEM AS ESTABLISHED BY THE CARBON COUNTY SURVEYORS OFFICE: N 0° 07' 36" BETWEEN THE WEST 1/4 CORNER OF SECTION 6 AND THE NORTHWEST CORNER OF SECTION 6, T. 15 S., R. 14 E., S. L. B. & M.
- NOTE 3 - THE APPARENT BEARING USED ON THE RECORDED PLAT WAS N 0° 35' E BETWEEN THE WEST 1/4 CORNER OF SECTION 6 AND THE NORTHWEST CORNER OF SECTION 6, T. 15 S., R. 14 E., S. L. B. & M.
- NOTE 4 - ROTATE BEARINGS 0° 42' 36" COUNTER CLOCKWISE ON RECORDED PLAT TO CORRESPOND WITH UTAH STATE PLANE COORDINATE SYSTEM.
- NOTE 5 - THE STATE PLANE COORDINATES SHOW PROJECT DATUM COORDINATES AND NOT SEA LEVEL DATUM COORDINATES.
- NOTE 6 - THE RECORDED SUBDIVISION IS LAID OUT AND MEASURED FROM THE EAST 1/4 CORNER OF SECTION 1, T. 15 S., R. 13 E., S. L. B. & M., INSTEAD OF THE WEST 1/4 CORNER OF SECTION 6, T. 15 S., R. 14 E., S. L. B. & M., AS SHOWN ON THE RECORDED PLAT.
- NOTE 7 - RECORDED PLAT MATHEMATICALLY CLOSED 0.081 IN THE NORTH AND 0.001 IN THE EAST AFTER USING CORRECTIONS SHOWN ON THIS PLAT



POINT	NORTH COORDINATE	EAST COORDINATE
Control Monument No. 3	445,900.86	2,315,405.72
" " No. 4	445,490.95	2,314,450.93
" " No. 5	445,125.33	2,313,308.17
" " No. 10	445,597.18	2,312,887.75
" " No. 11	445,327.16	2,313,294.75
" " No. 12	445,692.42	2,314,416.06
" " No. 13	445,069.40	2,314,896.16
" " No. 14	446,078.84	2,314,330.19
" " No. 15	445,716.38	2,313,803.90
" " No. 16	445,703.43	2,313,485.56
" " No. 17	445,877.49	2,313,105.57
" " No. 20	446,018.80	2,314,660.68
West 1/4 Cor. Sec. 6	444,877.77	2,310,760.69
East 1/4 Cor. Sec. 1	444,941.03	2,310,760.54
Radius Pt. for Curve No. 2	445,683.32	2,313,131.16
" " " No. 4	446,342.49	2,313,618.91
" " " No. 7	445,811.99	2,314,336.24
" " " No. 8	446,430.53	2,314,543.01
" " " No. 10	445,854.82	2,314,750.63
" " " No. 11	445,890.68	2,314,396.69
" " " No. 14	447,805.12	2,312,999.13

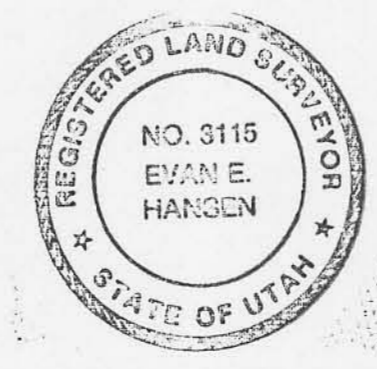
Monument No.	Bearing and Distance	To Corner	Lot No.	Block No.
No. 3	S 67° 04' 51" W 1' 443.36'	SE	10 B	7
No. 4	N 82° 53' 23" W 6.14'	SE	22	6
No. 5	N 80° 53' 47" E 56.83'	SW	1	6
No. 10	N 82° 25' 37" W 58.55'	SW	1	4
No. 11	S 31° 23' 21" E 109.66'	SW	3	6
No. 12	S 28° 55' 35" E 74.52'	SW	3	7
No. 13	N 8° 43' 59" E 666.53'	SE	10 B	7
No. 14	N 20° 18' 55" E 11.01'	SW	19	7 A
No. 15	S 66° 11' 08" E 18.54'	NE	23	5
No. 16	S 27° 55' 58" W 12.67'	NE	17	5
No. 17	N 56° 55' 29" E 19.46'	SE	7	4
No. 20	N 81° 40' 46" E 40.60'	NE	8	7

△ INDICATES CONTROL MONUMENTS

**ENGINEER'S CERTIFICATE**

I, EVAN E. HANSEN, DO HEREBY CERTIFY THAT I AM A REGISTERED LAND SURVEYOR AND PROFESSIONAL ENGINEER HOLDING CERTIFICATES NO. 3115 AND NO. 3354 AS PRESCRIBED UNDER THE LAWS OF THE STATE OF UTAH. I FURTHER CERTIFY THAT I HAVE BEEN AUTHORIZED BY SUNNYSIDE CITY TO SET SURVEY CONTROL MONUMENTS AT THE LOCATIONS SHOWN ON THIS PLAT AND THEY ARE CORRECT TO THE BEST OF MY KNOWLEDGE.

*Evan E. Hansen* FEB 23 1987  
 EVAN E. HANSEN DATE



SUNNYSIDE CITY CORPORATION  
 PRESENTED TO THE SUNNYSIDE CITY COUNCIL THIS 12th DAY OF March A.D., 1987, AT WHICH TIME THIS MONUMENTATION WAS APPROVED AND ACCEPTED.  
*Tom Anderson* ATTEST: CITY RECORDER  
*Lloyd Heath* MAYOR

RECORDED # 19999  
 STATE OF UTAH COUNTY OF CARBON RECORDED AND FILED AT THE REQUEST OF:  
**SUNNYSIDE CITY**  
 DATE 3/22/88 TIME 10:39 AM BOOK 4 OF PLATS PAGE 270  
 FEE \$ --- CARBON COUNTY RECORDER

**Empire Engineering & Land Surveying**  
 86 NORTH 200 EAST PRICE, UTAH 84501 PHONE (801) 637-7498  
 SUNNYSIDE REMONUMENTATION SUBDIVISION PLAT "B"  
 Drawn By: T.H. Approved By: E.E.H. Drawing No. EESD-047 D  
 Date: JAN. 1987 Scale: 1"=100'